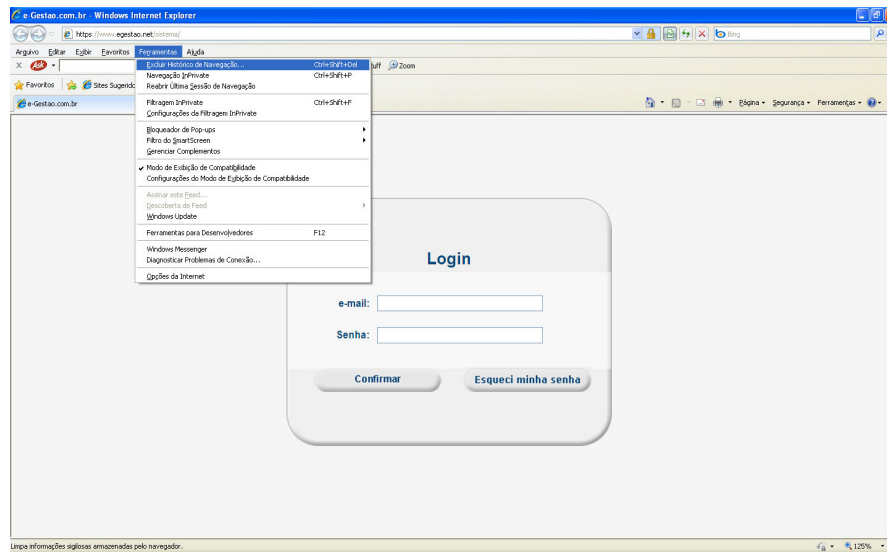


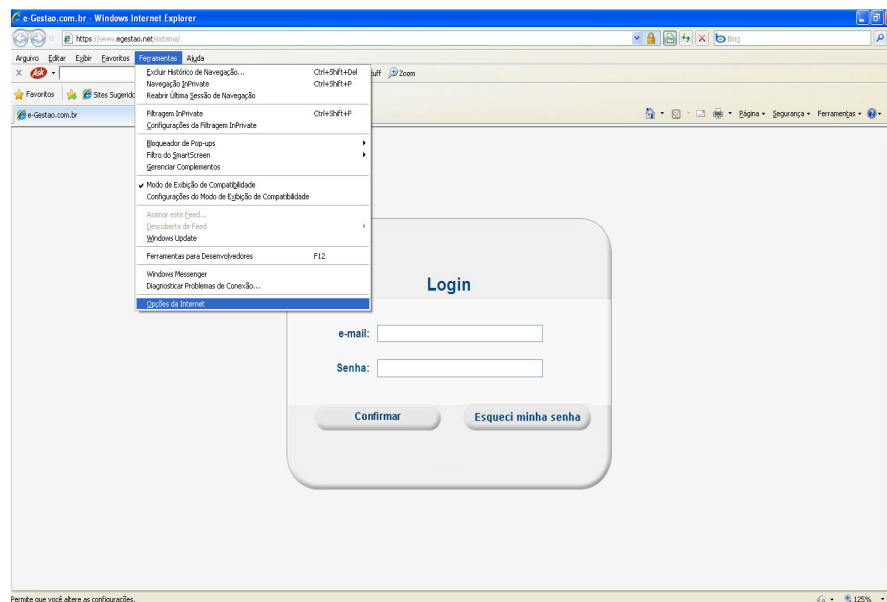
II-Procedimentos Para Utilizar o Activex...

1- Acessar o Site <https://www.egestao.net/sistema/>.

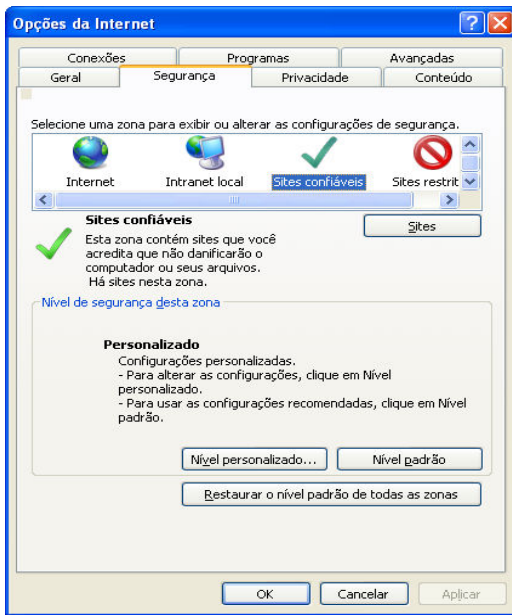
2- Após entrar no sistema, no internet explorer, entre no menu Ferramentas conforme figura abaixo.



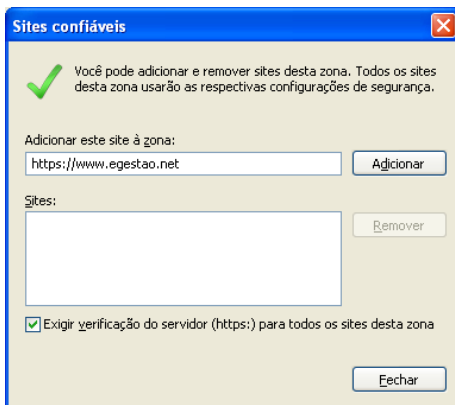
3- Clicar em opções da internet



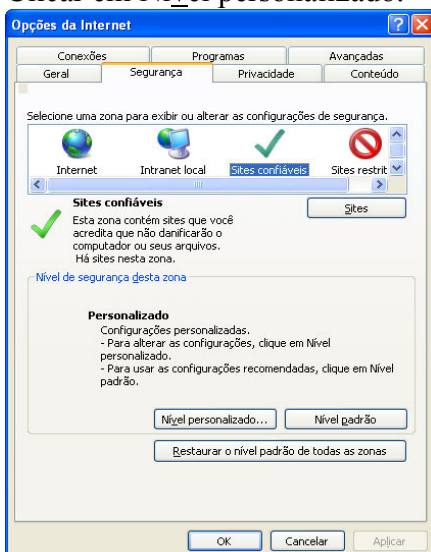
- 4- Ao lado do menu Geral, clicar em segurança.
Selecionar Sites confiáveis e ir até Sites.



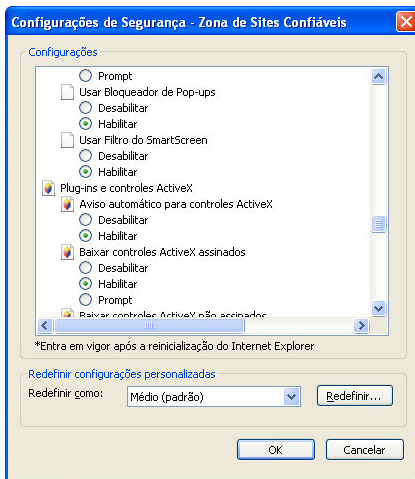
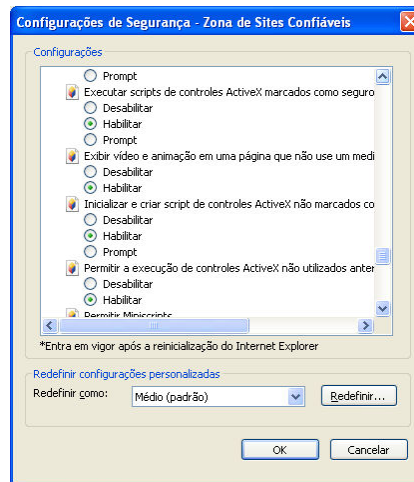
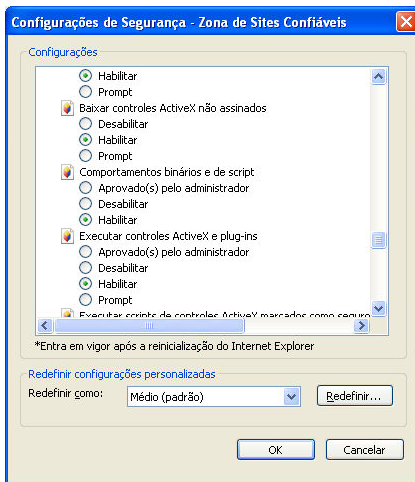
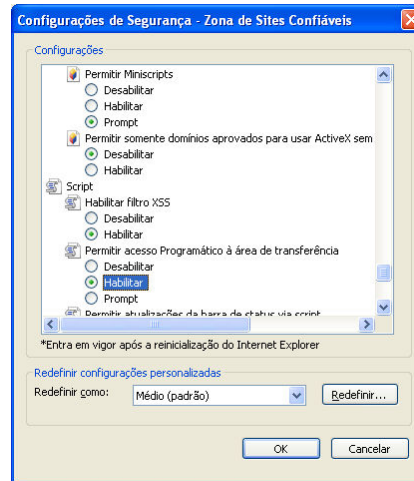
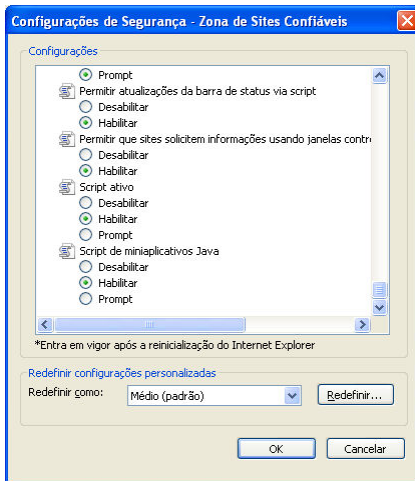
- 5- Abrirá uma janela conforme demonstra a figura abaixo.
Adicionar o site <https://www.egestao.net>.
Clicar em fechar.



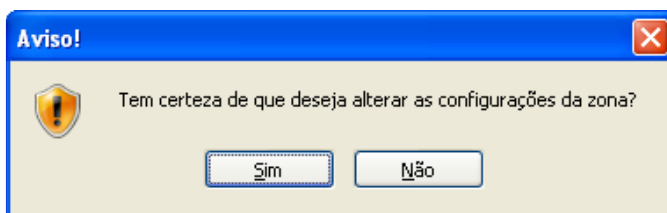
- 6- Voltará para esta tela.
Clicar em Nível personalizado.



7-Selecionar e definir as opções conforme as figuras abaixo.



8- Clicar em OK, aparecerá a seguinte mensagem.



Clicar em Sim.

9- Fechar todas as janelas inclusive do Internet explorer.

10- Acessar o Sistema com <https://www.egestao.net/sistema/>, e fazer os procedimentos normais.